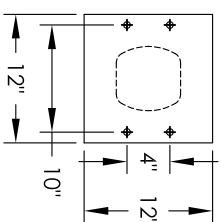
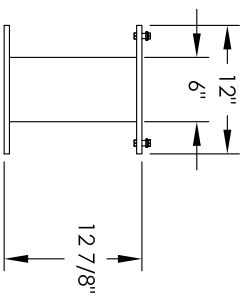
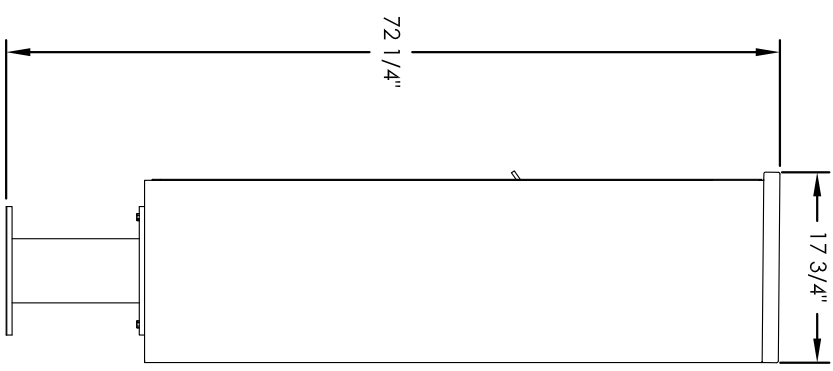
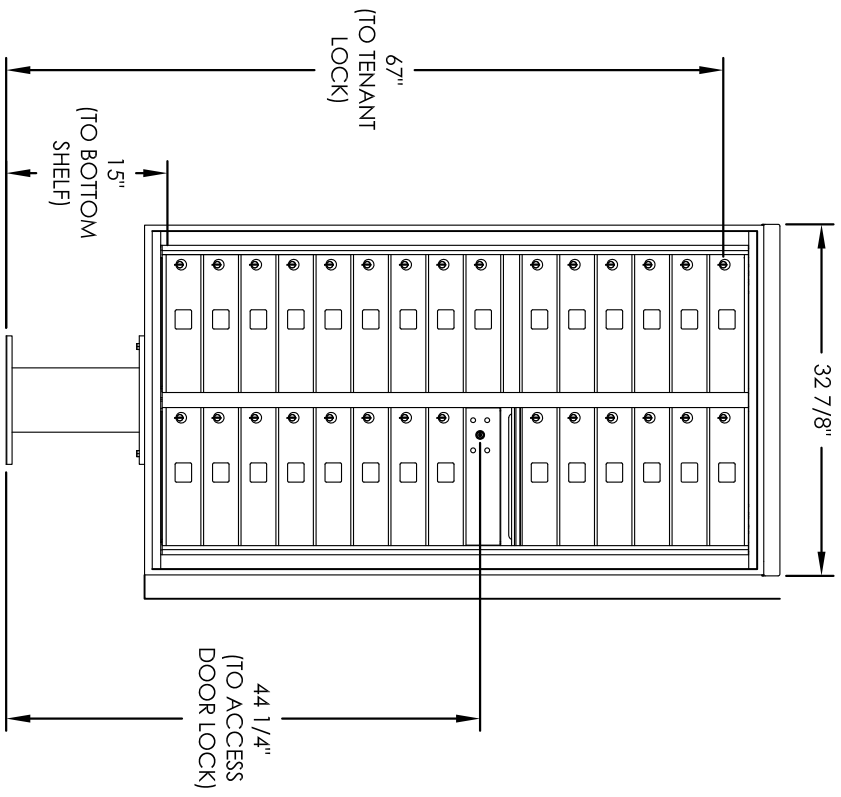


# Versatile™ 4C Pedestal Mount Mailbox, 4C16D-29-P



PEDESTAL DETAIL

### COMPARTMENT CHART

DESCRIPTION	COMPARTMENT	COMPARTMENT SIZE	QTY.
MAILBOX	MB1	3" H x 12" W x 15" D	29
OUTGOING MAIL	OM1	3" H x 12" W x 15" D	1

PRODUCT SERIES: VERSATILE™ 4C PEDESTAL MOUNT MAILBOX

**Notes:**

- This module does NOT meet USPS STD-4C installation specification requirements as shown below:
  - At least one customer compartment shall be positioned less than 48" above finished floor (AFF).
  - No parcel locker (interior bottom shelf) shall be positioned less than 15" AFF.
  - No patron (tenant) lock shall be positioned more than 67" AFF.
  - No customer compartment (interior bottom shelf) shall be positioned less than 28" AFF.
  - The USPS Arrow lock shall be positioned 36"-48" AFF.
- This 4C mailbox is to be used for private applications.
- The rough opening width for multi-unit 4C installations = (the sum of all actual unit widths) - 1/8".



**AF FIORENCE**  
manufacturing company

5935 Corporate Drive • Manhattan, KS 66503  
www.fiorencemailboxes.com • (800) 275-1747  
A GIBRALTAR INDUSTRIES COMPANY

MODEL: 4C16D-29-P    REV: D

SCALE: NONE    LAST REV DATE: 5/14/2014

DRAWING NUMBER: 4C16D-29-PCS    DRAWN BY: SDH