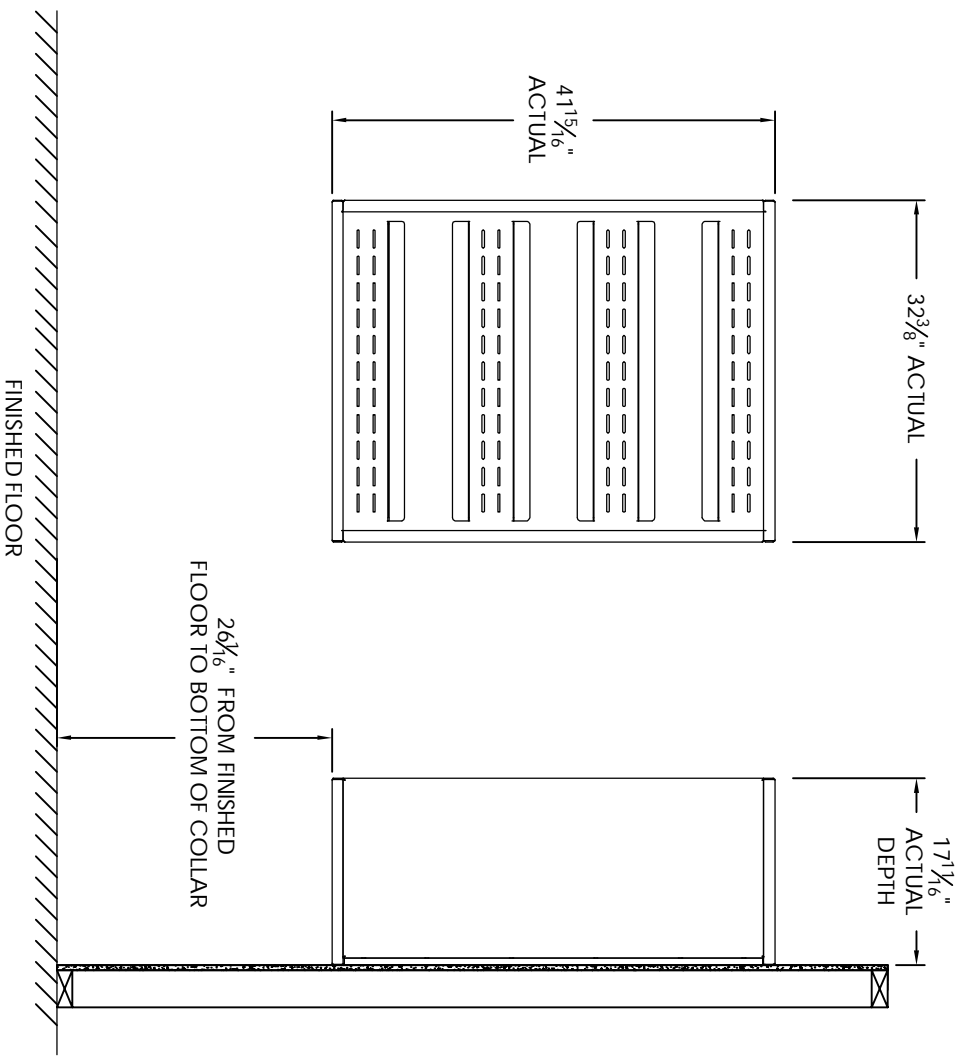


Versatile™ 4C Surface Mount Collar, SM11D



- Notes:
1. Designed to mount Florence Versatile™ 4C mailbox double column 11-High Suite modules (sold separately).
 2. For use with front loading modules only.

PRODUCT SERIES: VERSATILE™ 4C SURFACE MOUNT COLLAR			
AF FLORENCE manufacturing company		5935 Corporate Drive • Manhattan, KS 66503 www.florencemailboxes.com • (800) 275-1747 A GIBRALTAR INDUSTRIES COMPANY	
MODEL	SM11D	REV	B
SCALE	NONE	LAST REV. DATE	7/02/2014
DRAWING NUMBER	SM11DCS	DRAWN BY	TNS